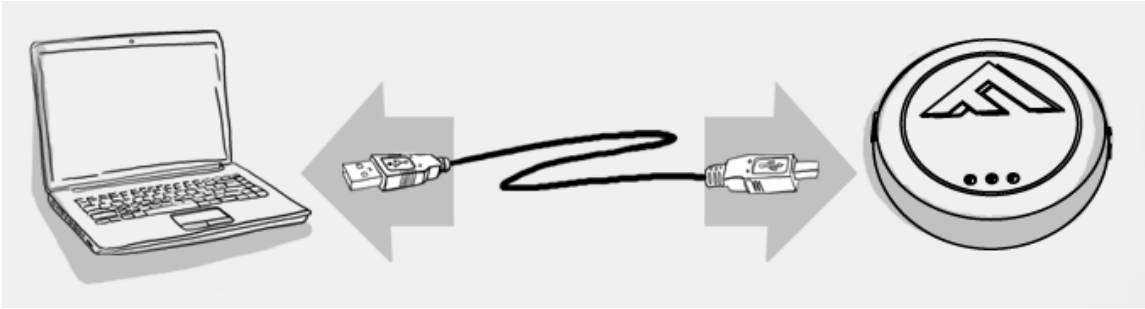


## CrimeStopper REVO with EVO-ONE

1. Plug in the Flash-Link-2 updater into the computer's USB port with the provided USB cable.



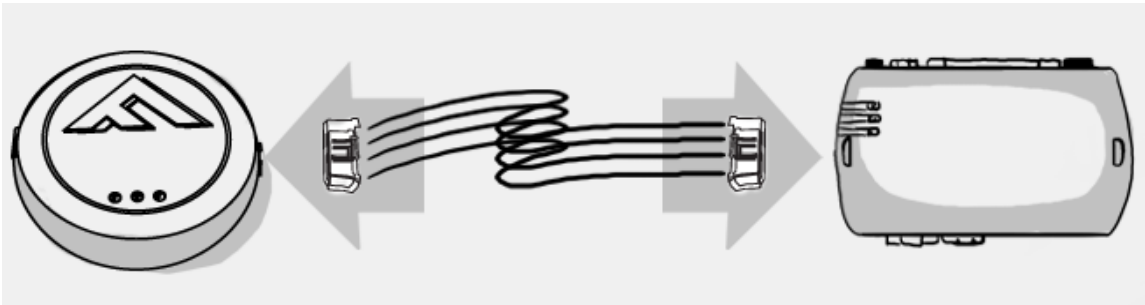
2. Run Flash Link Manager Software.



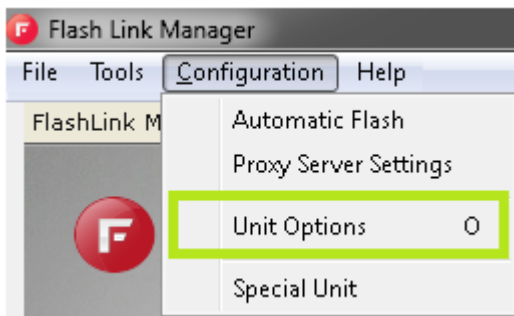
3. Click TOGGLE to switch to remote starter connection mode.



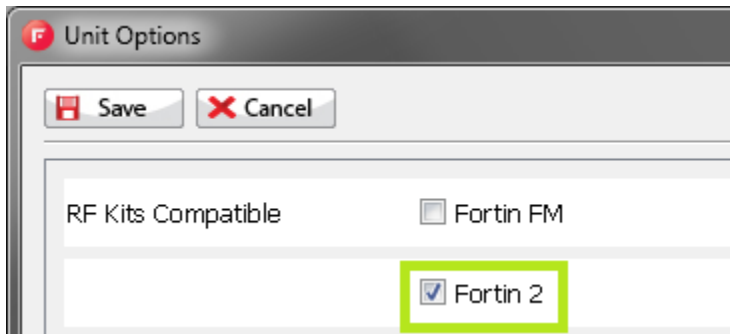
4. Plug in the EVO-ONE with provided DATALINK cable.



5. Click configuration and then Unit Options.



6. Select FORTIN2, click SAVE and disconnect the EVO-ONE



7. Connect the REVO with the DATALINK cable supplied with the REVO unit in the Blue 4pin connector with clip of the EVO-ONE.

8. To program the remotes on the EVO-ONE, Turn IGNITION ON. Press and hold Valet switch until the side red light flash on EVO-ONE then release. Press and release the Valet switch 5 times. Press and release the Brake pedal once. Press and release the Brake pedal once. Press lock one any remote. Turn IGNITION OFF.

