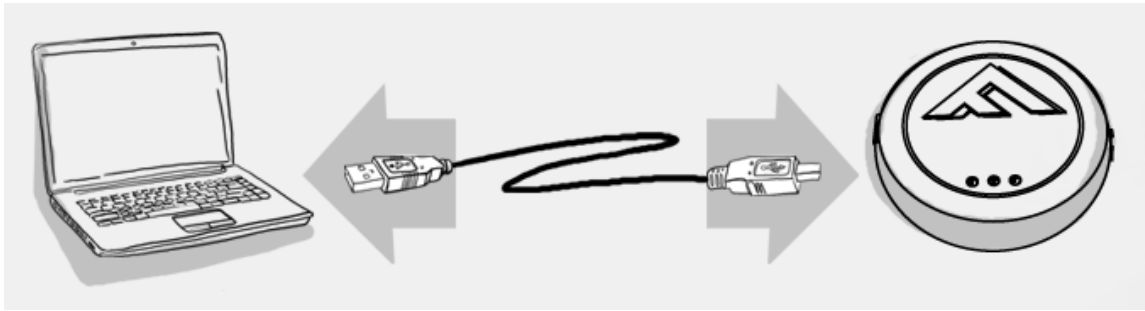


## AudioVox with EVO-ONE

1. Plug in the Flash-Link-2 updater into the computer's USB port with the provided USB cable.



2. Run Flash Link Manager Software.



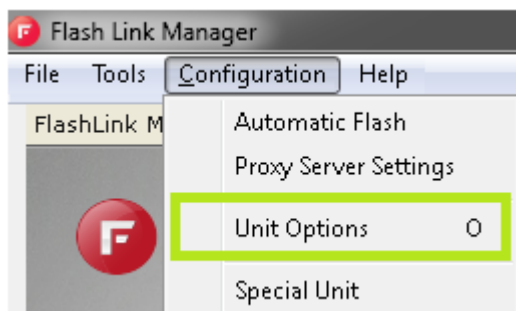
3. Click TOGGLE to switch to remote starter connection mode.



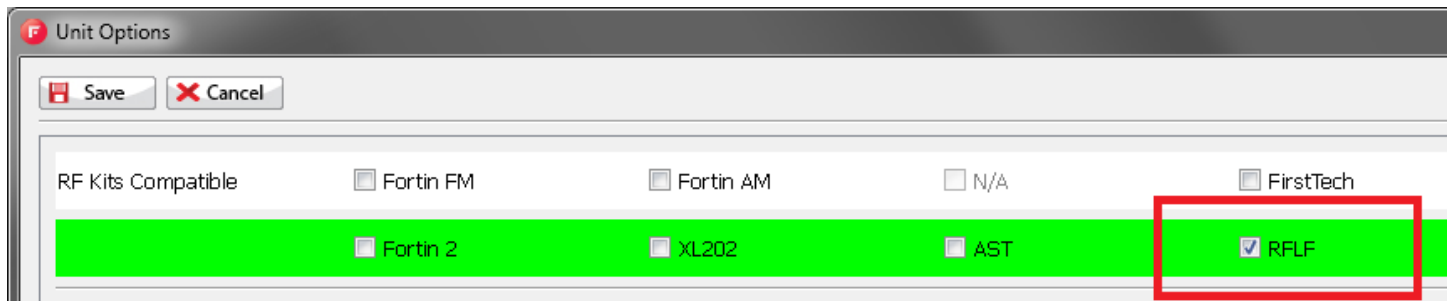
4. Plug in the EVO-ONE with provided DATALINK cable.



5. Click configuration and then Unit Options.



6. Select RFLF, click SAVE and disconnect the EVO-ONE










7. Connect the AudioVox Unit and the EVO-ONE together with the AudioVox cable.



8. To Program remotes on the AudioVox Unit, Refer to the AudioVox Unit Install guide.

9. To program the remotes on the EVO-ONE, Turn IGNITION ON. Press and hold Valet switch until the side red light flash on EVO-ONE then release. Press and release the Valet switch 5 times. Press and release the Brake pedal once. Press lock one any remote. Turn IGNITION OFF.

STEP 1	STEP 2	STEP 3	STEP 4	STEP 5	STEP 6	STEP 7
						
Turn the Ignition on.	Press and hold the valet-switch until the LED flashes, then release.	Press and release the valet-switch 5X. The park-lights will flash to confirm.	Press and release the brake pedal once.	press the LOCK button once the park-lights will flashto confirm	Press and release the brake-pedal once.	Turn the Ignition off.